

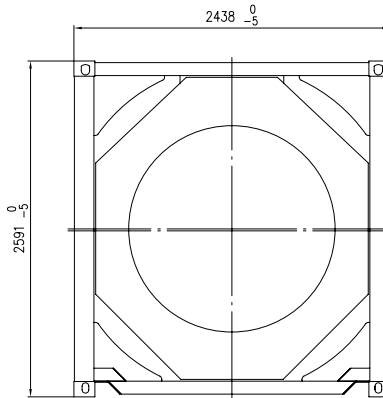
CITERNE MOBILE / PORTABLE TANK (6.7)  
 CONTENEUR CITERNE / TANK CONTAINER (6.8)

**CERTIFICAT D'INSPECTION INITIALE / INITIAL INSPECTION CERTIFICATE**

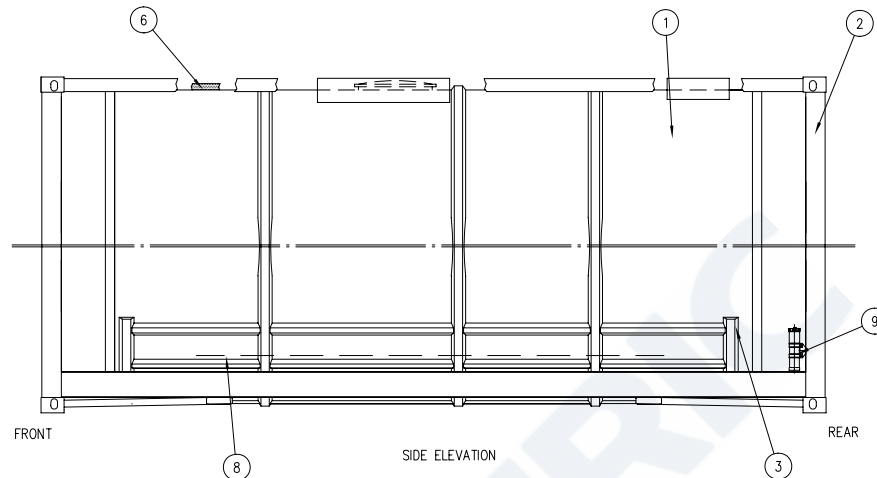
Rapport n° / Report Nb : ..... / ..... / ..... / .....

CONTENEUR CITERNE / TANK CONTAINER : SEGU 804605 - 4		BVCT : 1470046/S
Masse brute maxi / Maxi gross weight : 36000 kg	Tare : 3770 kg	Charge utile / Payload : 32230 kg
PROPRIETAIRE / OWNER : Seaco SRL.		EXPLOITANT / OPERATOR :
Instruction(s) de transport ou code-citerne : Transport instruction(s) or tank code UN PORTABLE TANK T 11 and L4BN		Dispositions spéciales : Special requirement(s)
Modèle / Model : NTC-LT-0325	N° de série / Serial n° : NCTE14T 06169	Code pays / Country code : CN
Type : UN PORTABLE TANK	Dimensions (mm) : 6058 x 2438 x 2591 mm	Code type / Type code : 22K2
CAPACITE Nominale / Nominal : 25000 l	AGREMENTS / APPROVALS :	TC : IMPACT APPROVED
CAPACITY Mesurée / Measured : 24910 l	IMDG : F/BV/11/092-T11	US-DOT : UN PORTABLE TANK
PRESSION de service / Working : 4 bar	RID/ADR : F/6190/BV/14	UIC : OR 592
PRESSURE d'épreuve / Test : 6 bar	CSC : F/BV/11148/10	
	TIR: GB/C 8363 BV/2011	
MATIERES AUTORISEES AU TRANSPORT / SUBSTANCES SUITABLE FOR TRANSPORT :		
<input checked="" type="checkbox"/> selon instructions(s) de transport (citerne mobile) / in accordance with transport instruction(s) (portable tank)		
<input checked="" type="checkbox"/> selon code citerne (conteneur citerne) / in accordance with tank code (tank container)		
CONSTRUCTEUR / MANUFACTURER : NANTONG CIMC TANK EQUIPMENT CO., LTD		
DECLARATION DU CONSTRUCTEUR : Je soussigné, certifie que le conteneur ci-dessus (citerne n° NCTE14T 06169) a été construit et contrôlé dans les mêmes conditions que le conteneur prototype de base certifié par le BUREAU VERITAS, sous le n° BVCT 1170220/V		
STATEMENT OF THE MANUFACTURER : I, the undersigned, certify that the above mentioned tank container (tank n°NCTE14T 06169) has been manufactured and inspected in the same way as the basic prototype container certified by BUREAU VERITAS under BVCT n° 1170220/V		
CARACTERISTIQUES / CHARACTERISTICS		CONTROLES / INSPECTIONS
PLAN D'ENSEMBLE N° / GENERAL DRAW N° : NTC-4163G (R 4-4)		Ce conteneur citerne a été construit sous surveillance du BUREAU VERITAS, en accord avec les prescriptions suivantes This tank container has been manufactured under BUREAU VERITAS survey, in accordance with the following prescriptions :
CODE CALCUL / DESIGN :		
Température : -40 ~ 130 °C	Pression / Pressure : 4 bar	
MATERIAUX / MATERIALS		
Structure / Frame : SPA-H or equivalent		
Citerne / Tank Head : SANS 50028-7(2005):1.4402 C<=0.03%		
Tank Shell : SANS 50028-7(2005):1.4402 C<=0.03%		
CITERNE / TANK :		
Diamètre / Diameter nominal : 2380 mm - Compart. Nb : 1		
Epaisseur mini de construction / Mini design thickn :		
Virole / Shell : 4.18 mm		
Fonds / Heads (A/F) : 4.4 mm		
Epaisseur équivalente d'acier / Reference steel thickness		
Virole / Shell : 6.39 mm		IMDG : 6.0 mm
Fonds / Heads : 6.55 mm		US-DOT : 6.0 mm
EQUIPEMENTS / EQUIPMENTS		
Calorifuge / Insulation : 50mm Rockwool 55kg/m3, Max. original chloride content of 45 ppm with GRP cladding .		
Réchauf./Heater (V) : Steam ( 8 longitudinal Runs )		
Pr Service / Work. Press : 4 Bars		Pr. Epreuve / Test Pr. : 6 Bars
Surface / Actual Area : 4.7 sqm		Effective Area : 9.87 sqm
Vidange / Outlet :		
		⇒ Haute / Top : Provision Only
		⇒ Gravit. / Bottom : YES
		⇒ Fermt./ Clos : 3
DISPOSITIFS DE SECURITE / SAFETY DEVICES		
Soupapes / Relief valve 1 (Tarage/Setting) : 4.4/0.21 bar		
Disque de rupture / Disc. rupture (Tarage/Setting) (20°C) : - bar		
Disque de rupture / Disc. rupture (Tarage/Setting) (60°C) : - bar		
Montage / Mouting : Serie <input type="checkbox"/> Parallèle <input type="checkbox"/>		
Débit total en air / Total vent. capacity : 5.746 m3/s (15°C - 1 bar)		
PROTECTION / COATING :		
Interne / Internal <input type="checkbox"/>		Externe / External <input checked="" type="checkbox"/> Rockwool & GRP
ESSAI à / TESTS at :		R = 36000 kg
Gerbage à / Stacking at :		192000 kg
Sollicitation dynamique à / Impact test at : SRS Method g à / at R = 36000 kg		
PLAN DE MARQUAGE N° / MARKING DRAW. N° : NTC-4163M (R 4-4 ) & NTC-4163D (R4-4)		
POINÇONNAGE / STAMPING : 09/04/2014		
Sur plaque d'identification <input checked="" type="checkbox"/> du conteneur citerne <input checked="" type="checkbox"/> de la citerne mobile On the <input checked="" type="checkbox"/> tank container <input checked="" type="checkbox"/> portable tank name plate		
Vignette BV sur fond arrière / BV label on rear head		
Etabli à / Issued at : SHANGHAI		le/on : 10/04/2014
Inspecté par : Simon Zhao		Visa : Simon Zhao
Inspected by		
Région-Bureau : SHANGHAI P.R.C		Cachet / Stamp
Région-Office		

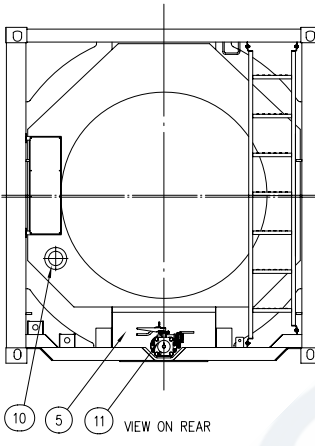




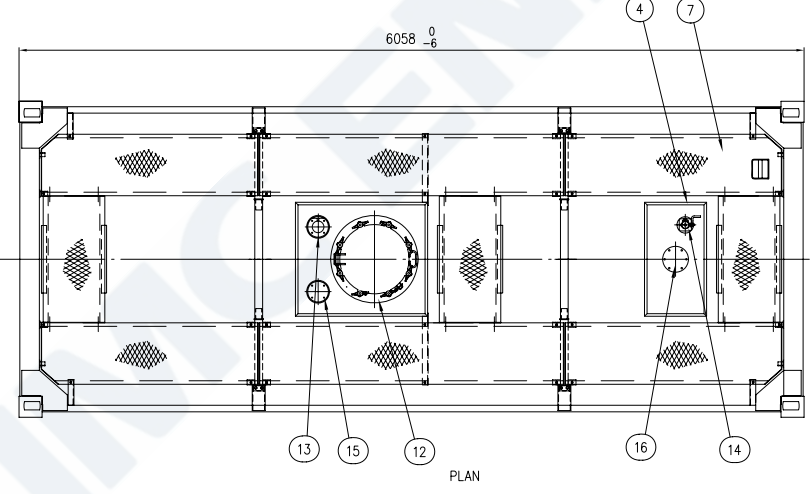
VIEW ON FRONT



SIDE ELEVATION  
INSULATION NOT SHOWN FOR CLARITY

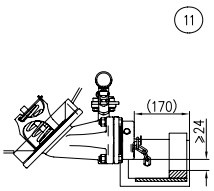


VIEW ON REAR

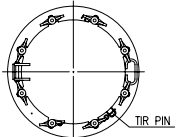
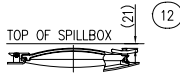


PLAN

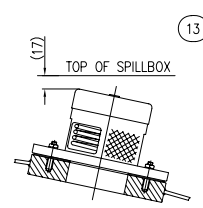
SPECIFICATION	
CODES AND REGULATION	UN PORTABLE TANK (11), MCGUK DTI, US DOT CFR49, ADR/RID, UIC, TR, CSC, FRA, AAR 600, TC, ASME III DIV 1/EN14025, ISO 1496-3
M.P.G.M.	36000 kg ( 79365 lbs )
TARE MASS(NOMINAL)	3770 kg ( 8310 lbs )
PAYLOAD	32230 kg ( 71055 lbs )
M.A.W.P.	TANK 4 BAR HEATING COILS 4 BAR
HYDROSTATIC TEST PRESSURE	TANK 6 BAR HEATING COILS 6 BAR
EXTERNAL DESIGN PRESSURE	0.41 BAR
TANK MATERIAL	SHELL: SMS 50028-7 1.4002 Equipment to 306L.C(0.03% Cold rolled 2B finish) DNCS: SMS 50028-7 1.4002 Equipment to 306L.C(0.03% Hot rolled, polished)
CONTAINER SIZE	6058mm lg x 2438mm wide x 2591mm high
TANK SIZE ( INTERNAL )	2380 mm I/DIA x 5982 mm lg
AMBIENT TEMPERATURE	-40℃~65℃ (-40°F~149°F)
VESSEL DESIGN TEMPERATURE	-40℃~130℃ (-40°F~266°F)
RADIOGRAPHY	SHELL(ALL "T" JOINTS) DISHED END(100%)
CAPACITY(±0.75%)	25000 LITERS (6605 US GALLONS)



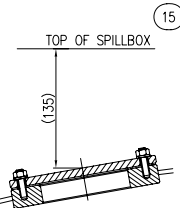
3" BSP BOTTOM OUTLET ASSEMBLY



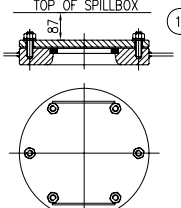
500mm MANWAY ASSEMBLY



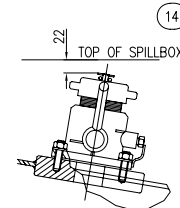
3" FLANGED RELIEF VALVE ASSEMBLY



3" RELIEF VALVE PROVISION



3" TOP OUTLET PROVISION



1.5" BSP AIRLINE ASSEMBLY

16	SPV02-00157	A	SPARE PRV-3",FLN,FV		1		0		
15	SPV02-00045	A	SPARE PRV-3",FLN,FV		1		0		
14	BAL01-00022	A	BAL,ASM-1.5",BSP,FV		1		0		
13	SRV02-00016	A	SRV,ASM-3",FLN,FV		1		0		
12	MLD01-00047	A	MLD,ASM-DN500,FV,BPT,CO		1		0		
11	BDC01-00013	B	BDC-3",BSP,45°HL,FV		1		*		
10	O6208-00011	A	Thermometer-T-40-160℃		1		*		
9	O6210-00004	B	DOC-φ75x325,CHAIN		1		*		
8	RMC01-00015	B	REMOTE-CABLE,CF		1		*		
7	WAK06-00014	C	WALKWAY-LB		1		0		
6	ICSO4-00074	A	INSU & CLAD-CF,C50		1		0		
5	BDB01-00047	A	BDB-CF25,45°		1		0		
4	SPB02-00159	A	SPILLBOX		1		0		
3	HVS01-00095	A	HEATING & VACUUM RING		1		0		
2	FRM01-00113	C	FRAME-CF25		1		0		
1	VSL25-00044	A	VESSLE-25		1		0		
ITEM	DWG NO.	ISSU	ENAME	CNAME	QTY	MATERIAL	E.WT	T.WT	NOTE

DESCRIPTION		25CBM 6058x2591x2438		CIMC 南通中集罐式储运设备制造有限公司 NANTONG CIMC TANK EQUIPMENT CO., LTD.		
DES.	沈敏	STAND.	SCALE	1:40	NAME	20 FEET ISO FRAME TANK
CHK.	陈国权	CHT.	MATERIAL		DWG.NO.	NTC-4163G
REV.	陈国权	SIG.	WEIGHT			
CRA.	DATE	2014.3.24	ISSUE	R4-4	SHEET NO.	1 OF 1

A	DATE	MODIFICATION	MOD.BY

THIS DRAWING AND ALL COPIES THEREOF ARE CONFIDENTIAL AND THE PROPERTY OF CIMC-NANTONG. ANY PART DRAWING SHALL NOT BE COPIED, REPRODUCED, DISCLOSED OR DISTRIBUTED TO A PARTY WITHOUT PRIOR WRITTEN APPROVAL FROM CIMC-NANTONG.